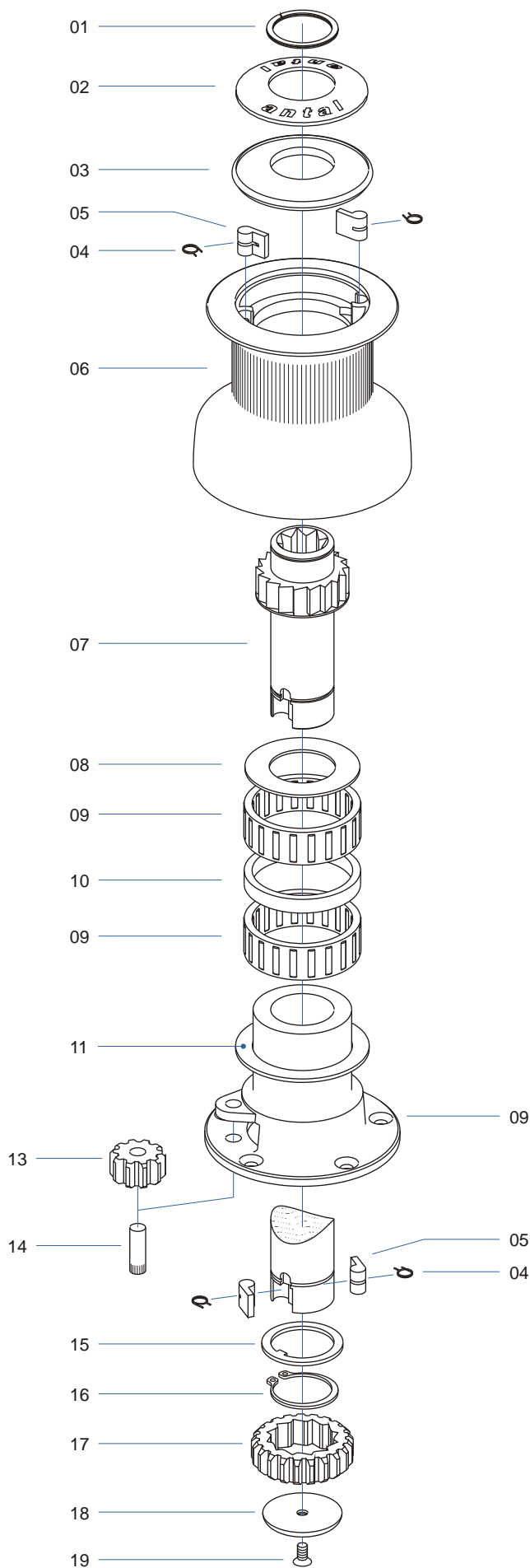


# WINCH MOD. W 16

Black anodized aluminium & chromed bronze

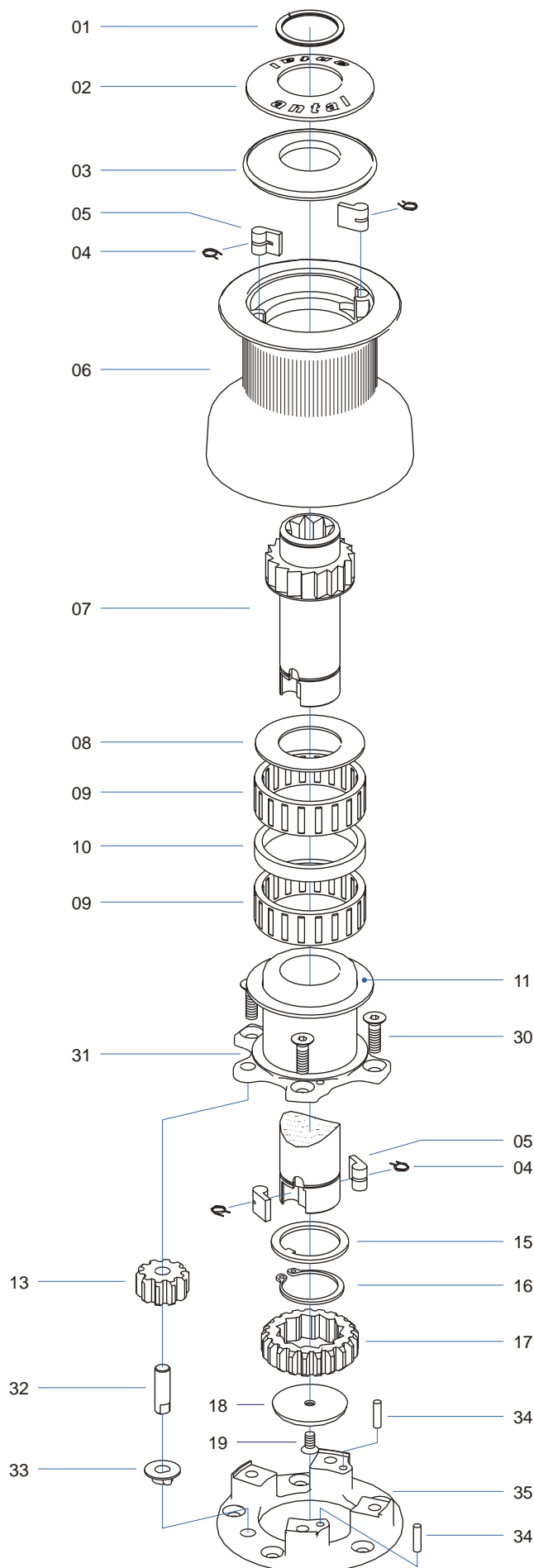


## PARTS LIST 01/98

KEY N.	DESCRIPTION	QUANT.
01	CIRCLIP	1
02	S.STEEL CAP	1
03	PLASTIC CAP	1
04	PAWL SPRING	4
05	PAWL	4
06	DRUM	1
07	S.STEEL SHAFT	1
08	PLASTIC WASHER	1
09	BASE ROLLER BEARING	2
10	PLASTIC SPACER	1
11	PLASTIC WASHER	1
12	BASE	1
13	BRONZE GEAR "B1"	1
14	S.STEEL SPINDLE	1
15	S.STEEL WASHER	1
16	SEGER	1
17	BRONZE GEAR "A1"	1
18	PLASTIC CAP	1
19	SCREW	1

# WINCH MOD. W 16

Black anodized aluminium & chromed bronze



## PARTS LIST 04/2001

KEY N.	DESCRIPTION	QUANT.
01	CIRCLIP	1
02	S.STEEL CAP	1
03	PLASTIC CAP	1
04	PAWL SPRING	4
05	PAWL	4
06	DRUM	1
07	S.STEEL SHAFT	1
08	PLASTIC WASHER	1
09	BASE ROLLER BEARING	2
10	PLASTIC SPACER	1
11	PLASTIC WASHER	1
13	BRONZE GEAR "B1"	1
15	S.STEEL WASHER	1
16	SEGER	1
17	BRONZE GEAR "A1"	1
18	PLASTIC CAP	1
19	SCREW	1
30	SCREW	4
31	CHROMED BRONZE BASE	1
32	S.STEEL SPINDLE	1
33	PLASTIC WASHER	1
34	S.STEEL PIN	2
35	ALU LOWER BASE	1