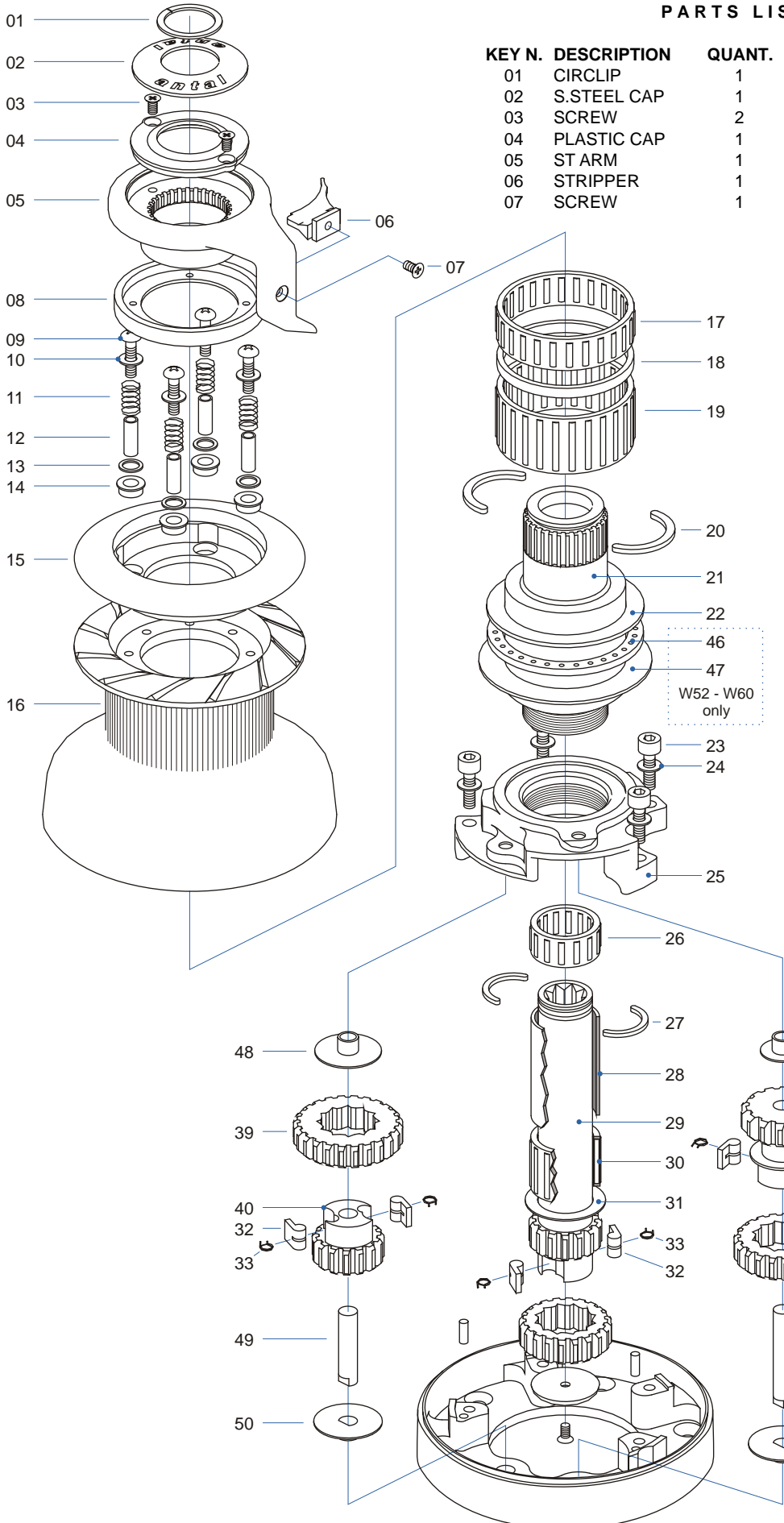


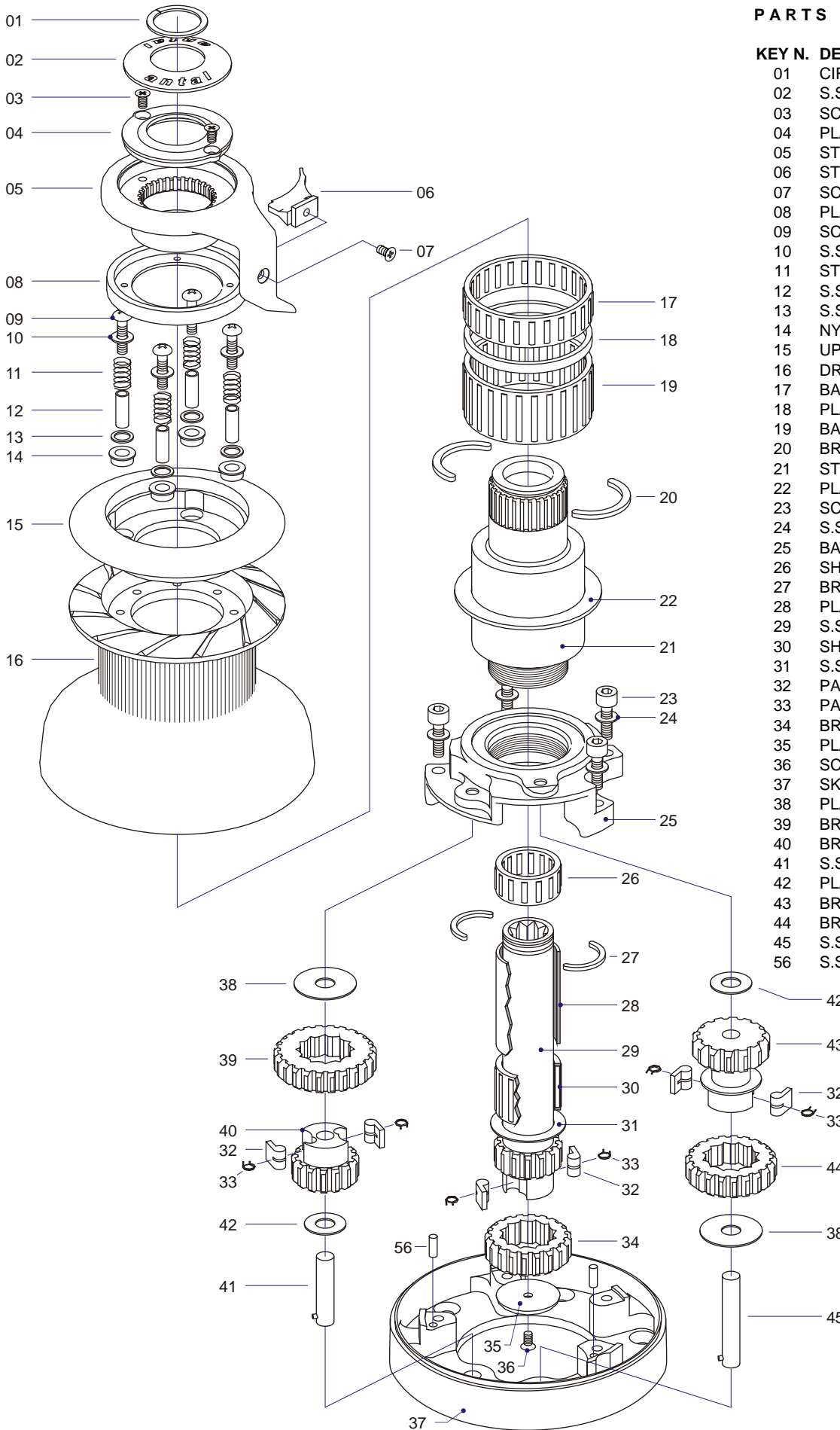
PARTS LIST 01/2000



KEY N.	DESCRIPTION	QUANT.	KEY N.	DESCRIPTION	QUANT.
01	CIRCLIP	1	08	PLASTIC ST RING	1
02	S.STEEL CAP	1	09	SCREW	4
03	SCREW	2	10	S.STEEL WASHER	4
04	PLASTIC CAP	1	11	ST SPRING	4
05	ST ARM	1	12	S.STEEL PIPE	4
06	STRIPPER	1	13	S.STEEL WASHER	4
07	SCREW	1	14	NYLON BUSH	4
			15	UPPER ST DISK	1
			16	DRUM	1
			17	BASE ROLLER BEARING	1
			18	PLASTIC SPACER	1
			19	BASE ROLLER BEARING	1
			20	BRONZE HALF RING	2
			21	STEM	1
			22	PLASTIC WASHER (W43/W46)	1
				S.STEEL WASHER (W52/W60)	1
			23	SCREW	4
			24	S.STEEL WASHER	4
			25	BASE	1
			26	SHAFT ROLLER BEARING	1
			27	BRONZE HALF RING	2
			28	PLASTIC SPACER	1
			29	S.STEEL SHAFT	1
			30	SHAFT ROLLER BEARING	1
			31	S.STEEL RING	1
			32	PAWL	6
			33	PAWL SPRING	6
			34	BRONZE GEAR "A2"	1
			35	PLASTIC CAP	1
			36	SCREW	1
			37	SKIRT	1
			39	BRONZE GEAR "D1"	1
			40	BRONZE GEAR "D2"	1
			43	BRONZE GEAR "B2"	1
			44	BRONZE GEAR "B1"	1
			46	S.STEEL BALL BEARING	1
			47	S.STEEL WASHER	1
			48	PLASTIC WASHER	1
			49	S.STEEL SPINDLE	1
			50	PLASTIC WASHER	1
			51	PLASTIC WASHER	1
			52	S.STEEL SPINDLE	1
			53	PLASTIC WASHER	1
			56	S.STEEL PIN	2

W52 - W60 only

PARTS LIST 01/98



KEY N.	DESCRIPTION	QUANT.
01	CIRCLIP	1
02	S.STEEL CAP	1
03	SCREW	2
04	PLASTIC CAP	1
05	ST ARM	1
06	STRIPPER	1
07	SCREW	1
08	PLASTIC ST RING	1
09	SCREW	4
10	S.STEEL WASHER	4
11	ST SPRING	4
12	S.STEEL PIPE	4
13	S.STEEL WASHER	4
14	NYLON BUSH	4
15	UPPER ST DISK	1
16	DRUM	1
17	BASE ROLLER BEARING	1
18	PLASTIC SPACER	1
19	BASE ROLLER BEARING	1
20	BRONZE HALF RING	2
21	STEM	1
22	PLASTIC WASHER	1
23	SCREW	4
24	S.STEEL WASHER	4
25	BASE	1
26	SHAFT ROLLER BEARING	1
27	BRONZE HALF RING	2
28	PLASTIC SPACER	1
29	S.STEEL SHAFT	1
30	SHAFT ROLLER BEARING	1
31	S.STEEL RING	1
32	PAWL	6
33	PAL SPRING	6
34	BRONZE GEAR "A2"	1
35	PLASTIC CAP	1
36	SCREW	1
37	SKIRT	1
38	PLASTIC WASHER	2
39	BRONZE GEAR "D1"	1
40	BRONZE GEAR "D2"	1
41	S.STEEL SPINDLE	1
42	PLASTIC WASHER	2
43	BRONZE GEAR "B2"	1
44	BRONZE GEAR "B1"	1
45	S.STEEL SPINDLE	1
46	S.STEEL PIN	2