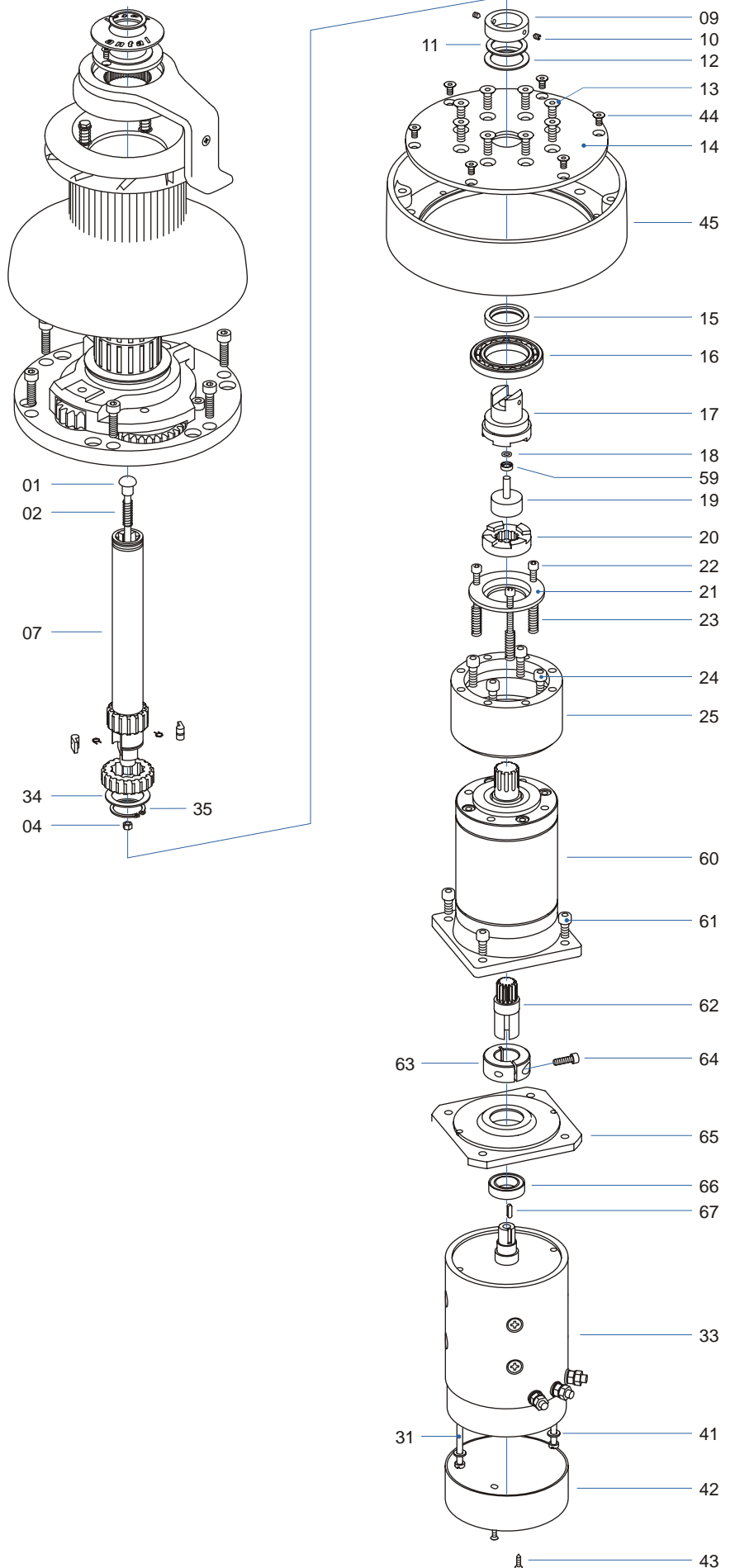


PARTS LIST 01/2003

KEY N.	DESCRIPTION	QUANT.
01	DISENGAGEMENT ROD	1
02	ROD SPRING	1
04	ROD LOCK	1
07	EL. WINCH SHAFT	1
09	SHAFT CONNECTION	1
10	CONNECTION SCREW	2
11	S.STEEL WASHER	1
12	PLASTIC WASHER	1
13	DECK BASE SCREW	8
14	DECK BASE	1
15	PACKING RING	1
16	BALL BEARING	1
17	UPPER COUPLING	1
18	O-RING	1
19	CUP	1
20	LOWER COUPLING	1
21	S.L. RING	1
22	RING SCREW	3
23	RING SPRING	3
24	BOX SCREW	4
25	DISENGAGEMENT BOX	1
31	MOTOR SCREW	2
34	RING	1
35	SEGER	1
41	MOTOR SCREW WASHER	2
42	MOTOR CAP	1
43	SCREW	2
44	DECK BASE SCREW	6
45	SKIRT	1
59	O-RING CUP	1
60	GEAR BOX	1
61	SCREW	4
62	GEARBOX SHAFT	1
63	SHAFT CONNECTION	1
64	SCREW	1
65	MOTOR FLANGE	1
66	WATERTIGHT BEARING	1
67	SPLINE	1



PARTS LIST 01/98

KEY N.	DESCRIPTION	QUANT.
01	DISENGAGEMENT ROD	1
02	ROD SPRING	1
04	ROD LOCK	1
07	EL. WINCH SHAFT	1
09	SHAFT CONNECTION	1
10	CONNECTION SCREW	2
11	S.STEEL WASHER	1
12	PLASTIC WASHER	1
13	DECK BASE SCREW	6
14	DECK BASE	1
15	PACKING RING	1
16	BALL BEARING	1
17	UPPER COUPLING	1
18	O-RING	1
19	CUP	1
20	LOWER COUPLING	1
21	S.L. RING	1
22	RING SCREW	3
23	RING SPRING	3
24	BOX SCREW	6
25	DISENGAGEMENT BOX	1
31	MOTOR SCREW	2
32	MOTOR FLANGE	1
33	MOTOR	1
34	RING	1
35	SEGER	1
37	WATERTIGHT BEARING	1
40	MOTOR FLANGE SCREW	6
41	MOTOR SCREW WASHER	2
42	MOTOR CAP	1
43	SCREW	2
44	DECK BASE SCREW	6
45	SKIRT	1
46	SCRAPER RING	2
47	ROLLER BEARING	1
48	WASHER	1
49	UPPER GEAR PLATE	1
50	GEAR	6
51	SPINDLE	6
52	LOWER GEAR PLATE	1
53	GEAR BOX	1
54	SCREW	1
55	S.STEL WASHER	1
56	SPLINE	1
57	MOTOR GEAR	1
58	BRONZE BEARING	1
59	O-RING CUP	1

