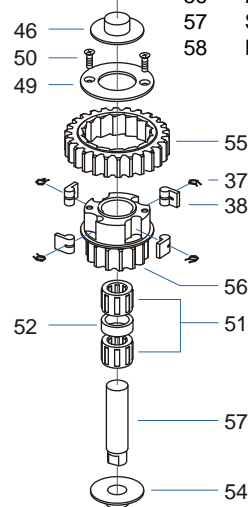
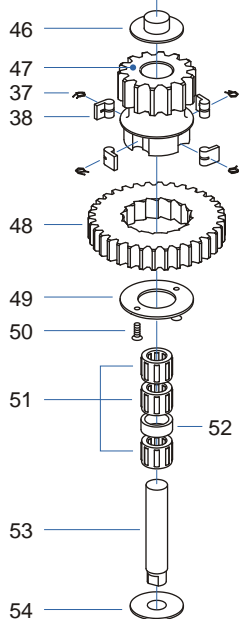


PARTS LIST 01/2002

KEY N.	DESCRIPTION	QUANT.	KEY N.	DESCRIPTION	QUANT.
01	CIRCLIP	1	12	S.STEEL WASHER	4
02	S.STEEL CAP	1	13	S.STEEL PIPE	4
03	SCREW	2	14	ST SPRING	4
04	BRONZE CAP	1	15	S.STEEL WASHER	4
05	ST ARM	1	16	NYLON BUSH	4
06	STRIPPER	1	17	UPPER ST DISK	1
07	SCREW	1	18	PLASTIC PLUG	4
08	PLASTIC ST RING	1	19	LOWER ST DISK	1
09	SCREW	2	20	SCREW	4
10	PLASTIC WASHER	1	21	DRUM	1
11	SCREW	4	22	SCREW	1
			23	DELRIN BALLS 13/32"	49
			24	BASE ROLLER BEARING	1
			25	BASE ROLLER BEARING	1
			26	BRONZE HALF RING	2
			27	STEM	1
			28	PLASTIC CAP	6
			29	SCREW	6
			30	BASE	1
			31	SHAFT ROLLER BEARING	2
			32	PLASTIC SPACER	1
			33	S.STEEL TRACK	1
			34	S.STEEL WASHER	1
			35	BRONZE HALF RING	2
			36	S.STEEL SHAFT	1
			37	PAWL SPRING	10
			38	PAWL	10
			39	BRONZE GEAR "A2"	1
			40	PLASTIC CAP	1
			41	SCREW	1
			42	S.STEEL SPACER	2
			43	SCREW	3
			44	GEAR BASE	1
			45	SKIRT	1
			46	PLASTIC WASHER	2
			47	BRONZE GEAR "B2"	1
			48	BRONZE GEAR "B1"	1
			49	S.STEEL CAP	2
			50	SCREW	4
			51	ROLLER BEARING	5
			52	PLASTIC SPACER	2
			53	S.STEEL SPINDLE "B"	1
			54	PLASTIC WASHER	2
			55	BRONZE GEAR "D1"	1
			56	BRONZE GEAR "D2"	1
			57	S.STEEL SPINDLE "D"	1
			58	PLASTIC SPACER	1



WINCH MOD. W 70 ST

Black anodized aluminium & chromed bronze

PARTS LIST 01/99

KEY N.	DESCRIPTION	QUANT.	KEY N.	DESCRIPTION	QUANT.
01	CIRCLIP	1	12	S.STEEL PIPE	4
02	S.STEEL CAP	1	13	ST SPRING	4
03	SCREW	2	14	S.STEEL WASHER	4
04	BRONZE CAP	1	15	NYLON BUSH	4
05	STRIPPER	1	16	UPPER ST DISK	1
06	ST ARM	1	17	PLASTIC WASHER	1
07	SCREW	1	18	SCREW	4
08	PLASTIC ST RING	1	19	PLASTIC PLUG	4
09	SCREW	2	20	LOWER ST DISK	1
10	SCREW	4	21	DRUM	1
11	S.STEEL WASHER	4	22	BASE ROLLER BEARING	3
			23	PLASTIC SPACER	1
			24	BRONZE HALF RING	2
			25	STEM	1
			26	SCREW	3
			27	S.STEEL WASHER	1
			28	S. STEEL BALL BEARING	1
			29	SCREW	6
			30	BASE	1
			31	SCREW	8
			32	BRONZE HALF RING	2
			33	SHAFT ROLLER BEARING	1
			34	PLASTIC SPACER	1
			35	SHAFT ROLLER BEARING	1
			36	S.STEEL RING	1
			37	S.STEEL SHAFT	1
			38	PAWL	10
			39	PAWL SPRING	10
			40	BRONZE GEAR "A2"	1
			41	S.STEEL SPACER	2
			42	PLASTIC CAP	1
			43	SCREW	1
			44	GEAR BASE	1
			45	SKIRT	1
			46	PLASTIC WASHER	4
			47	BRONZE GEAR "B2"	1
			48	BRONZE GEAR "B1"	1
			49	BRONZE CAP	2
			50	SCREW	4
			51	S.STEEL SPINDLE	1
			52	PLASTIC SPACER	1
			53	BRONZE GEAR "D1"	1
			54	BRONZE GEAR "D2"	1
			55	S.STEEL SPINDLE	1
			56	PLASTIC BUSH	2

